

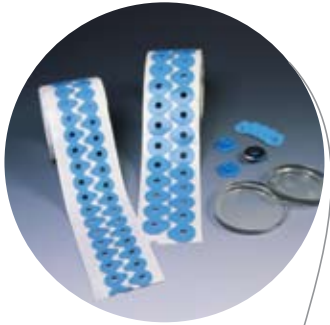


Solutions for the  
Optical Lab

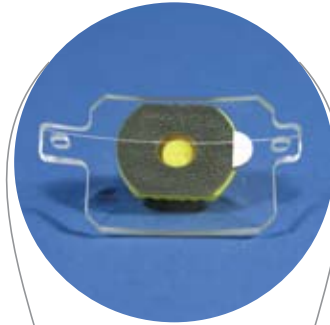
SecurEdge<sup>®</sup>  
Edging Pads

# Solutions for Optical Labs

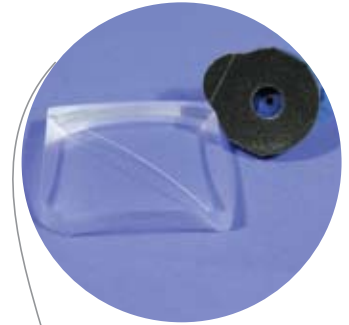
## Application Details and Challenges



*Easy liner release  
and wide range of  
sizes and shapes*



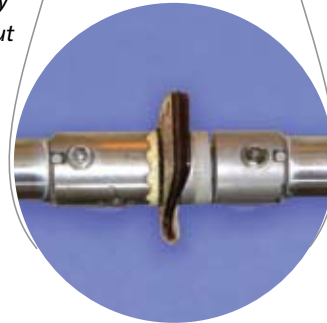
*Good conformability  
for maximum wet out  
and contact*



*Clean removal with  
no adhesive residue or  
marring of lens surface*



*Good adhesion to wide range  
of lens types and coatings*



*Exceptional torque resistance to  
keep lens and block aligned*

## Why All Edging Pads Are Not the Same

### ***Availability in a wide range of sizes and shapes...***

Saint-Gobain Performance Plastics has a global network of authorized distributors who can provide diecut pads in all the popular sizes and configurations for use within all major edging processes.

### ***The requirement for good adhesion to all types of lenses...***

Today's laboratories process a wide range of lens types and coatings. While it may not be possible for one pad to do it all, it is possible to engineer the adhesive properties of the edging pad to perform on a wide range of substrates. Saint-Gobain researchers have now optimized their adhesive systems for both general use products and specifically for super hydrophobic coatings.

### ***A high degree of conformability is critical...***

Studies have shown that one of the leading causes of edging failure is insufficient bond area of the pad to the lens. Correct selection of the finishing block with the best curvature match is important. This, coupled with an edging pad that conforms to the mismatch between the block and the lens surfaces, will provide the best opportunity to minimize losses in your edging process.





### ***Exceptional torque resistance...***

An appropriate adhesive alone does not guarantee a good edging pad. It must be combined with a conformable substrate, capable of withstanding the high torque forces created during the edging process. Too stiff a substrate places excessive strain on the adhesive, causing the pad to slip off the lens. Too soft and it remains adhered, but the elongation in the foam causes a high degree of offset. Achieving good torque resistance while maintaining the other required properties is a difficult challenge during product development.

### ***Clean removal, with no adhesive residue...***

High adhesion performance does not always mean good overall performance. While we must engineer the adhesive to bond adequately, it must also be designed to be removed cleanly after the edging process—not always a simple task. A high degree of competence is required when adhesive technology is so critical in the application. Especially where the end product needs to offer sufficient adhesive strength to prevent slippage during the edging process but still allow for subsequent clean removal from the lens surface that leaves behind no residue or ghosting effect.

## Product Family of Edging Pads

Standard		<b>OP7 Series</b> incorporates a strong foam core that ensures a precision hold. It is flexible and conformable, for good wet out to a wide range of lens curvatures. Acrylic adhesive on both sides ensures good stick and clean removal. OP7 is an economic alternative for non-super hydrophobic lens coatings.
		<b>6400 Series</b> is a high density polyolefin foam substrate incorporating acrylic adhesive technology on both surfaces. The product offers a strong bond to polished surfaces whilst giving the assurance of clean removal after use. Within the application, 6400 offers good rotational stability and high torque resistance.
High Quality		<b>SecurEdge® OP5C Series</b> is a unique reinforced foam that resists torque forces in the X-Y direction. Its soft foam surface conforms to lens curvature. The modified acrylic adhesive system adheres to a wide range of lens coatings.
		<b>SecurEdge® Plus OP44 Series*</b> is a microcellular elastomer tape substrate that combines good surface conformability with exceptional resistance to rotational forces. This Series incorporates a unique adhesive for use with the latest generation super hydrophobic coatings without the need for “clear base pads” or washable top coats.

\*Patent Pending

## Optical Pads Selection Chart

	Block		Lens Types		Coatings	
	Flexible	Hard	CR-39	Trivex/PC/ Glass/HiPlastic	Standard/ Hydrophobic	Super Hydrophobic
<b>OP7 Series</b>	■	●	■	▲	●	▲
<b>6400 Series</b>	■	▲	■	▲	●	▲
<b>SecurEdge® OP5C</b>	●	■	●	●	●	▲
<b>SecurEdge® Plus OP44</b>	●	●	●	●	●	●

● = Excellent, ■ = Good, ▲ = Fair

**Saint-Gobain Performance Plastics**  
Avenue du Parc 18  
B4650 Chaineux, Belgium  
Tel: (32) 87.32.20.11  
Fax: (32) 87.32.20.51  
sgppl.chaineux@saint-gobain.com

13 Earlstrees Road  
NN17 4NP Corby, Northants,  
Great Britain  
Tel: (44) 1536.276.000  
Fax: (44) 1536.203.427  
www.norfix.saint-gobain.com

One Sealants Park  
Granville, New York 12832, USA  
Tel: (800) 724-0883  
Fax: (518) 642-2793  
www.nortonfoam.com

6th floor, Fuchu South Building  
1-40 Miyamachi  
Fuchu-city, Tokyo 183-0023, Japan  
Tel: (81) 42-352-2104  
Fax: (81) 42-358-2887

13th floor, Dongshin Building  
141-28 Samsun-Dong  
Kangnam-Ku, Seoul 135-090, Korea  
Tel: (82) 2-508-8200  
Fax: (82) 2-554-1550

Suite 1203,  
147 Chienkwo North Road, Section 2  
Taipei, Taiwan, 104  
Tel: (886) 2-2503-4201  
Fax: (886) 2-2503-4202

1468 Kun Yang Road  
Minhang Development Zone  
Shanghai, 200245, China  
Tel: (86) 21.5472.1568  
Fax: (86) 21.5472.2378

Kuala Lumpur Office  
N°50, Jalan PJS 11/20  
46150 Petaling Jaya, Malaysia  
Tel: (60) 3 5636 4082  
Fax: (60) 3 5636 4099

Devanahalli Road,  
Via Old Madras Road  
Bangalore 560 049, India  
Tel: (91) 80.2847.2900  
Fax: (91) 80.2847.2616

R. Antonio Matheus Sobrino, 120  
Vinhedo-SP Brasil  
CEP: 13.280-000  
Tel: (55) 19.2127.8532/8530  
Fax: (55) 19.2127.8540

## Saint-Gobain Corporation

Saint-Gobain Performance Plastics (SGPPL) is a part of Saint-Gobain Corporation, one of the top 100 industrial companies in the world.

SGPPL is the world's largest producer of engineered high performance polymers, including fluoropolymers, silicones and high temperature thermal plastics.

Please contact one of the sites in the left-hand column for additional information, or contact Technical Services for guidance to the correct region for your application.

## Performance Taking Shape

Every day, Saint-Gobain products provide customers with the highest levels of performance — performance which is the result of creative ideas and innovative technologies.

A recognized leader in advanced polymer technology, Saint-Gobain Performance Plastics is part of an international family of companies comprising Compagnie de Saint-Gobain, a global force in engineered materials. With a worldwide network of manufacturing and sales facilities, Saint-Gobain Performance Plastics brings years of experience to developing innovative polymer solutions for its customers.

Distributed By:

*SecurEdge® is a registered trademark*

The data and details in this leaflet were correct and up-to-date at the time of printing and are intended to provide information on our products and their possible applications. This leaflet is not a specification and does not assure specific product characteristics or make reference to the suitability of the products for a definite application. Because Saint-Gobain cannot anticipate or control every application, we strongly recommend test of this product under individual application conditions.